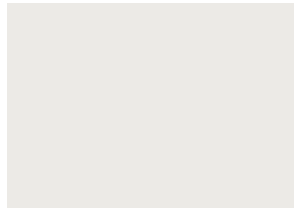


SikaColor[®]-200

COLOR HARDENER



A89 Blue Smoke



A72 Ash White



A53 Arizona Tan



A55 Pecan Tan



A52 Burberry Beige



P129 Soapstone



A78 Stone Gray



A65 Landmarks Gray



P29 Wheat



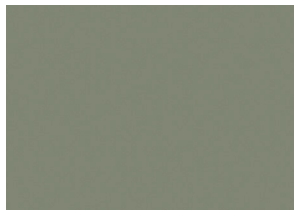
P24 French Cream



P32 Bone



P23 Smoke



P28 Slate Gray



A57 Platinum Gray



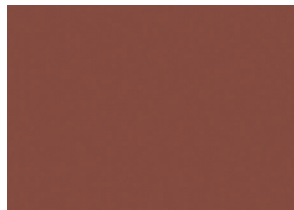
A33 Classic Gray



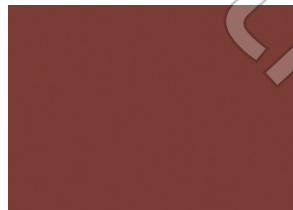
P13 Deep Charcoal



P14 Walnut



P15 Brick Red



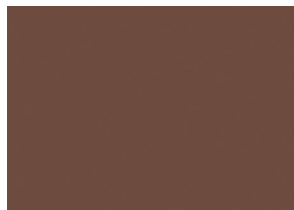
P16 Dark Red



P17 Terra Cotta



P18 Chestnut



P19 Russet

Colors shown on this chart approximate the color of broom finished concrete flatwork made with a medium gray cement and sealed with solvent-based SikaCem[®]-100 Clear Guard[®]. If SikaCem[®]-100 Clear Guard[®] is not used, the concrete color will not be as vibrant as shown. Concrete should be batched and placed in accordance with Product Data Sheets. Concrete color is altered by many factors, including cement and aggregate color, slump, finishing practices, and curing method. Using the contemplated materials and construction techniques, representative samples should be cast for approval, especially when exact color matching is important.

NOT FOR COLOR MATCHING

SikaColor®-200 COLOR HARDENER

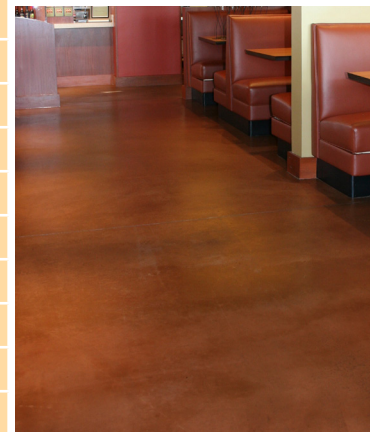
SikaColor®-200 Color Hardener is a dry shake, color hardener that is applied to the surface of freshly placed concrete. It is a cementitious-based coloring material that may be used to create abrasion resistant interior floors and freeze-thaw stable exterior hardscapes. The time-tested formulation of SikaColor®-200 Color Hardener creates an extremely dense surface that is resistant to foot and vehicular traffic, and extreme weather. It is available in a wide range of streak free, uniform colors ranging from subtle pastels to deep, rich hues. It is used to uniformly color gray concrete, or provide random accents of color on concrete integrally colored with SikaColor®-100 P Powder Integral Concrete Colorant, SikaColor®-120 G Granular Integral Concrete Colorant or SikaColor®-140 SG Powder Integral Concrete Colorant. SikaColor®-200 Color Hardener is also used when imprinting, texturing, or stenciling new concrete with SikaStamp® tools.

SikaColor®-200 Color Hardener is a precise blend of cement, silica quartz aggregates, synthetic metal oxides, and plasticizer. SikaColor®-200 Color Hardener conforms to ASTM Standard C979 for color stability. The water-reducing wetting agent in SikaColor®-200 Color Hardener allows it to be readily incorporated into the concrete surface, forming a rich paste that makes finishing easier. In addition to strength and durability, the color hardened surface is resistant to fading.

SikaColor®-200 Color Hardener adds a wide array of color options to your architectural designs and hardscape projects while providing an extremely durable surface for pedestrian and vehicular traffic. SikaColor®-200 Color Hardener, used in conjunction with varying finishing techniques such as jointing schemes, saw cutting and/or pattern stamping, can create a striking effect. Combinations of colors can be used to create a desired mood and theme. SikaColor®-200 Color Hardener is an excellent choice for high traffic industrial flooring, since it greatly increases the strength and durability of the concrete surface. Using lighter colors will optimize lighting in an industrial environment.

SikaColor®-200 Color Hardener Comparable Color Reference Table

LITHOCHROME® Color Hardener Colors*	Perma-Shake® Color Hardener Colors*
A21 Deep Charcoal	P13 Deep Charcoal
A24 Russet	P19 Russet
A25 La Crescenta Brown	P18 Chestnut
A26 Brick Red	P15 Brick Red
A27 Dark Red	P16 Dark Red
A29 Terra Cotta	P17 Terra Cotta
A31 Walnut	P14 Walnut
A33 Classic Gray	P12 Storm Gray
A50 Slate Gray	P28 Slate Gray
A52 Burberry Beige	P38 Ivory Sand
A53 Arizona Tan	P27 Canyon
A54 Smoke Beige	P23 Smoke
A55 Pecan Tan	P25 Colina Tan
A57 Platinum Gray	P26 Cape Cod Gray
A58 Swiss Coffee	P29 Wheat
A59 Beige Cream	P24 French Cream
A72 Ash White	P34 Nantucket White
A75 Oyster White	P32 Bone
A78 Stone Gray	P31 Gray Linen



***Please note that the represented SikaColor®-200 Color Hardener colors on the front of this chart are a direct crossover to the LITHOCHROME® Color Hardener or Perma-Shake® Color Hardener colors.**

SIKA CORPORATION
625 West Illinois Avenue
Aurora, IL 60506
Phone: 800 282 3388
usa.sika.com

Our most current General Sales Conditions shall apply.
Please consult the Product Data Sheets prior to any use
and processing.

BUILDING TRUST

